

**SCREENING REPORT FOR AN ENVIRONMENTAL AUTHORIZATION AS
REQUIRED BY THE 2014 EIA REGULATIONS – PROPOSED SITE
ENVIRONMENTAL SENSITIVITY**

EIA Reference number:

Project name: Velaskar Property Development (Pty) Ltd

Project title: Develop a shopping centre on Portion 16 of the farm Klein Dassenberg No. 20 in Atlantis.

Date screening report generated: 02/06/2023 14:58:36

Applicant: Velaskar Property Development (Pty) Ltd

Compiler: P. Harmse

Compiler signature:

.....

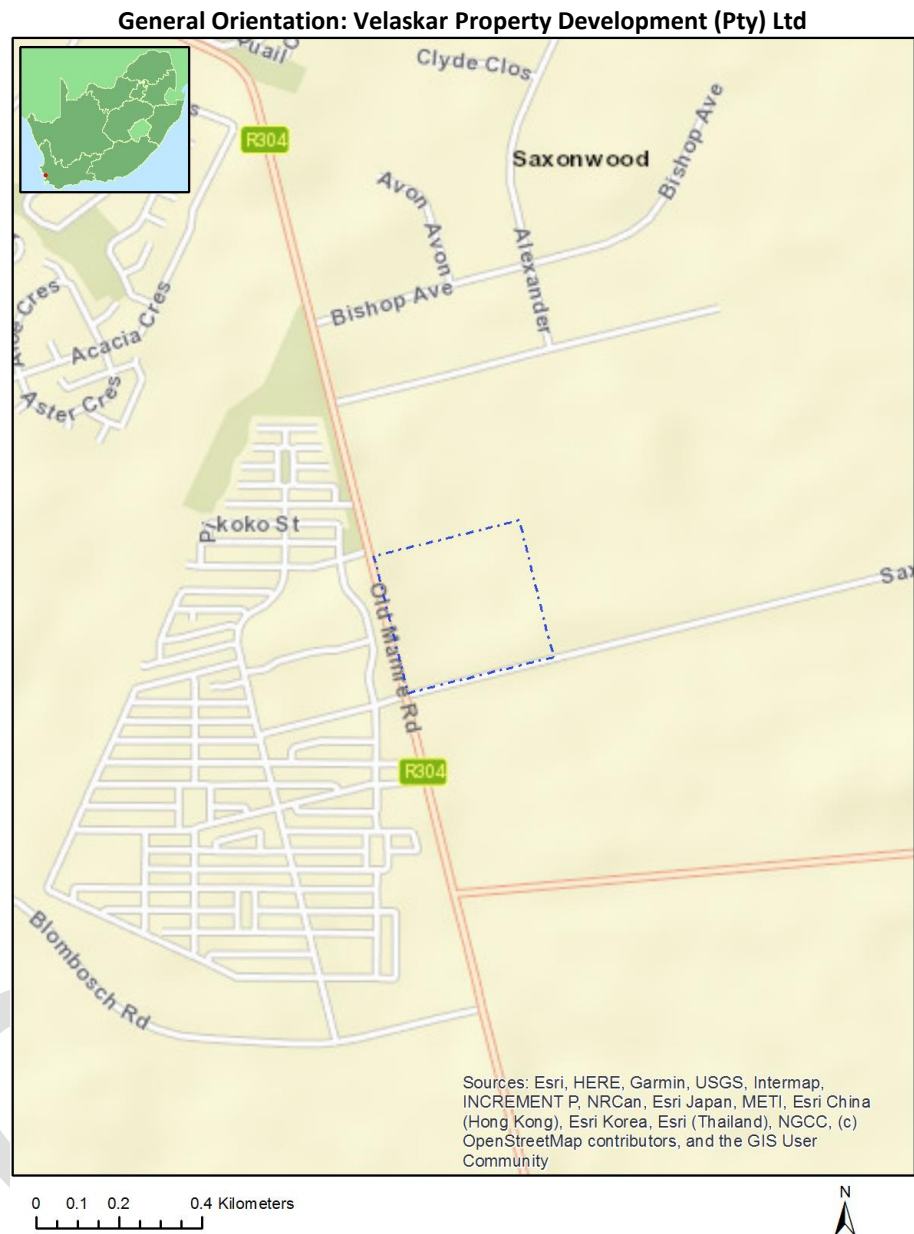
Application Category: Transformation of land | Indigenous vegetation

Table of Contents

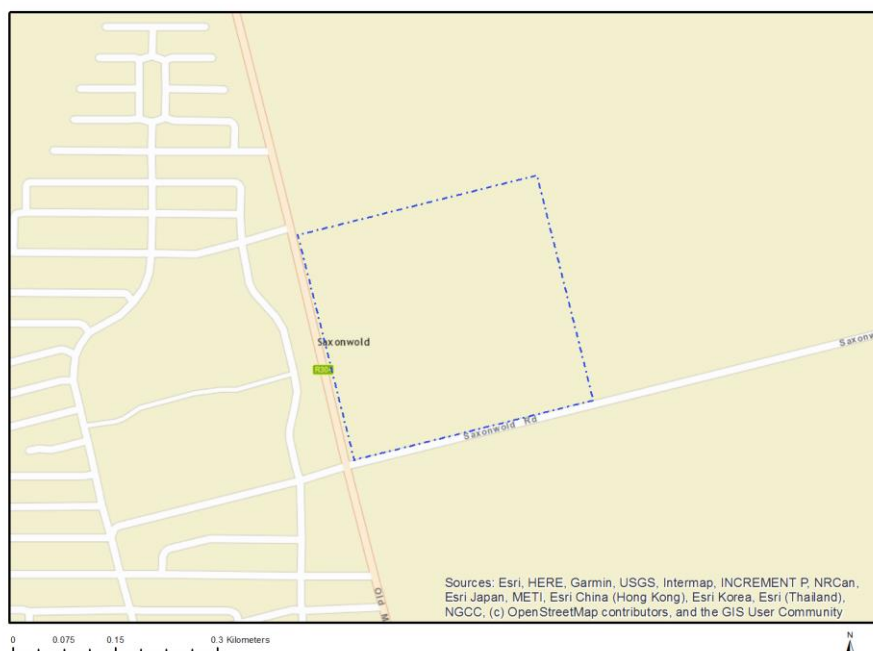
Proposed Project Location	3
Orientation map 1: General location	3
Map of proposed site and relevant area(s)	4
Cadastral details of the proposed site	4
Wind and Solar developments with an approved Environmental Authorisation or applications under consideration within 30 km of the proposed area	4
Environmental Management Frameworks relevant to the application	5
Environmental screening results and assessment outcomes	5
Relevant development incentives, restrictions, exclusions or prohibitions	5
Proposed Development Area Environmental Sensitivity	5
Specialist assessments identified	6
Results of the environmental sensitivity of the proposed area	7
MAP OF RELATIVE AGRICULTURE THEME SENSITIVITY	7
MAP OF RELATIVE ANIMAL SPECIES THEME SENSITIVITY	8
MAP OF RELATIVE AQUATIC BIODIVERSITY THEME SENSITIVITY	9
MAP OF RELATIVE ARCHAEOLOGICAL AND CULTURAL HERITAGE THEME SENSITIVITY	10
MAP OF RELATIVE CIVIL AVIATION THEME SENSITIVITY	11
MAP OF RELATIVE DEFENCE THEME SENSITIVITY	12
MAP OF RELATIVE PALEONTOLOGY THEME SENSITIVITY	13
MAP OF RELATIVE PLANT SPECIES THEME SENSITIVITY	14
MAP OF RELATIVE TERRESTRIAL BIODIVERSITY THEME SENSITIVITY	17

Proposed Project Location

Orientation map 1: General location



Map of proposed site and relevant area(s)



Cadastral details of the proposed site

Property details:

No	Farm Name	Farm/ Erf No	Portion	Latitude	Longitude	Property Type
1	KLEIN DASENBERG	20	0	33°34'36.55S	18°32'27.91E	Farm
2	KLEIN DASENBERG	20	16	33°35'6.39S	18°30'34.9E	Farm Portion

Development footprint¹ vertices:

No development footprint(s) specified.

Wind and Solar developments with an approved Environmental Authorisation or applications under consideration within 30 km of the proposed area

No	EIA Reference No	Classification	Status of application	Distance from proposed area (km)
1	12/12/20/2109	Solar PV	Approved	11
2	12/12/20/2384	Solar PV	Approved	17.5
3	12/12/20/2393	Solar PV	Approved	28.7

¹ "development footprint", means the area within the site on which the development will take place and includes all ancillary developments for example roads, power lines, boundary walls, paving etc. which require vegetation clearance or which will be disturbed and for which the application has been submitted.

Environmental Management Frameworks relevant to the application

No intersections with EMF areas found.

Environmental screening results and assessment outcomes

The following sections contain a summary of any development incentives, restrictions, exclusions or prohibitions that apply to the proposed development site as well as the most environmental sensitive features on the site based on the site sensitivity screening results for the application classification that was selected. The application classification selected for this report is:

Transformation of land | Indigenous vegetation.

Relevant development incentives, restrictions, exclusions or prohibitions

The following development incentives, restrictions, exclusions or prohibitions and their implications that apply to this site are indicated below.

Incentive, restriction or prohibition	Implication
Strategic Transmission Corridor-Central corridor	https://screening.environment.gov.za/ScreeningDownloads/DevelopmentZones/Combined_EGI.pdf
Strategic Gas Pipeline Corridors-Phase 1a & 1b: Saldanha to Ankerlig and Saldanha to Mossel Bay	https://screening.environment.gov.za/ScreeningDownloads/DevelopmentZones/Combined_GAS.pdf
South African Conservation Areas	https://screening.environment.gov.za/ScreeningDownloads/DevelopmentZones/SACAD_OR_2022_Q4_Metadata.pdf

Proposed Development Area Environmental Sensitivity

The following summary of the development site environmental sensitivities is identified. Only the highest environmental sensitivity is indicated. The footprint environmental sensitivities for the proposed development footprint as identified, are indicative only and must be verified on site by a suitably qualified person before the specialist assessments identified below can be confirmed.

Theme	Very High sensitivity	High sensitivity	Medium sensitivity	Low sensitivity
Agriculture Theme			X	
Animal Species Theme			X	
Aquatic Biodiversity Theme				X
Archaeological and Cultural Heritage Theme				X
Civil Aviation Theme		X		
Defence Theme				X
Paleontology Theme				X
Plant Species Theme			X	
Terrestrial Biodiversity Theme	X			

Specialist assessments identified

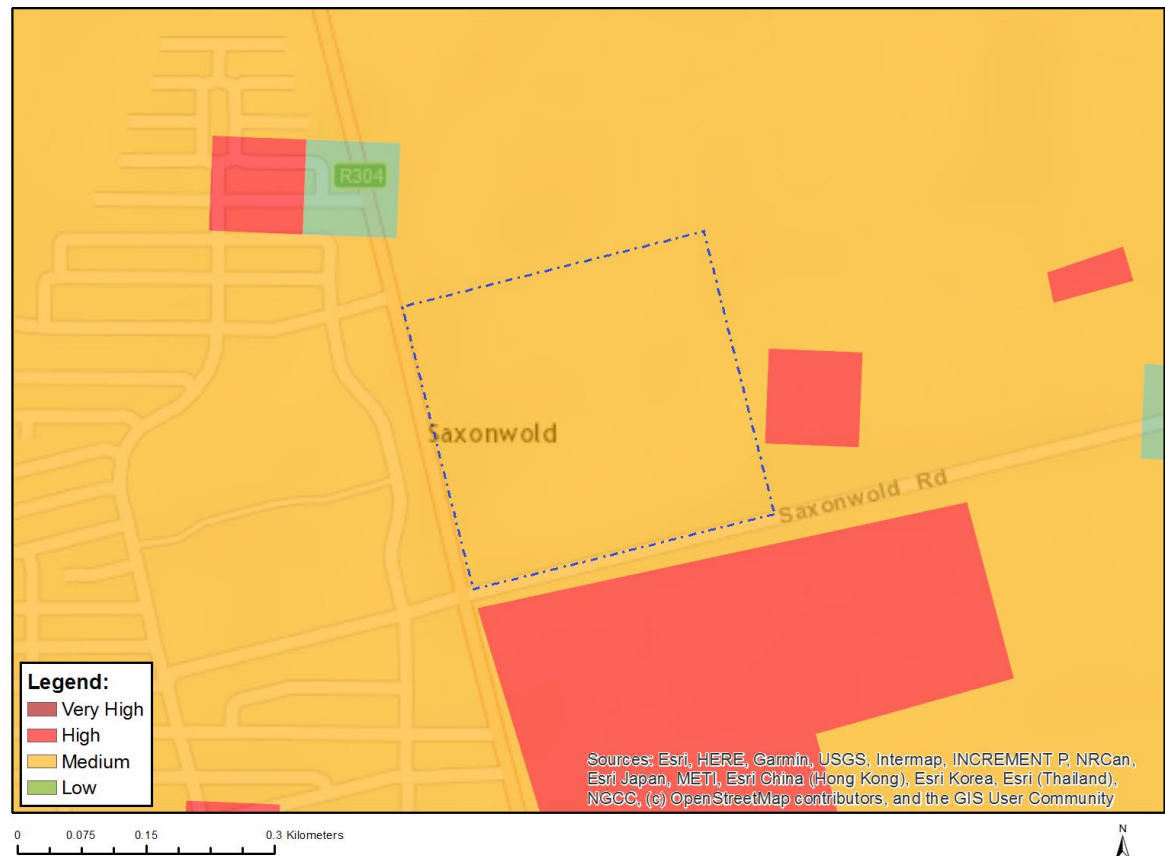
Based on the selected classification, and the known impacts associated with the proposed development, the following list of specialist assessments have been identified for inclusion in the assessment report. It is the responsibility of the EAP to confirm this list and to motivate in the assessment report, the reason for not including any of the identified specialist study including the provision of photographic evidence of the site situation.

No	Specialist assessment	Assessment Protocol
1	Landscape/Visual Impact Assessment	https://screening.environment.gov.za/ScreeningDownloads/AssessmentProtocols/Gazetted_General_Requirement_Assessment_Protocols.pdf
2	Archaeological and Cultural Heritage Impact Assessment	https://screening.environment.gov.za/ScreeningDownloads/AssessmentProtocols/Gazetted_General_Requirement_Assessment_Protocols.pdf
3	Palaeontology Impact Assessment	https://screening.environment.gov.za/ScreeningDownloads/AssessmentProtocols/Gazetted_General_Requirement_Assessment_Protocols.pdf
4	Terrestrial Biodiversity Impact Assessment	https://screening.environment.gov.za/ScreeningDownloads/AssessmentProtocols/Gazetted_Terrestrial_Biodiversity_Assessment_Protocols.pdf
5	Aquatic Biodiversity Impact Assessment	https://screening.environment.gov.za/ScreeningDownloads/AssessmentProtocols/Gazetted_Aquatic_Biodiversity_Assessment_Protocols.pdf
6	Socio-Economic Assessment	https://screening.environment.gov.za/ScreeningDownloads/AssessmentProtocols/Gazetted_General_Requirement_Assessment_Protocols.pdf
7	Plant Species Assessment	https://screening.environment.gov.za/ScreeningDownloads/AssessmentProtocols/Gazetted_Plant_Species_Assessment_Protocols.pdf
8	Animal Species Assessment	https://screening.environment.gov.za/ScreeningDownloads/AssessmentProtocols/Gazetted_Animal_Species_Assessment_Protocols.pdf

Results of the environmental sensitivity of the proposed area.

The following section represents the results of the screening for environmental sensitivity of the proposed site for relevant environmental themes associated with the project classification. It is the duty of the EAP to ensure that the environmental themes provided by the screening tool are comprehensive and complete for the project. Refer to the disclaimer.

MAP OF RELATIVE AGRICULTURE THEME SENSITIVITY

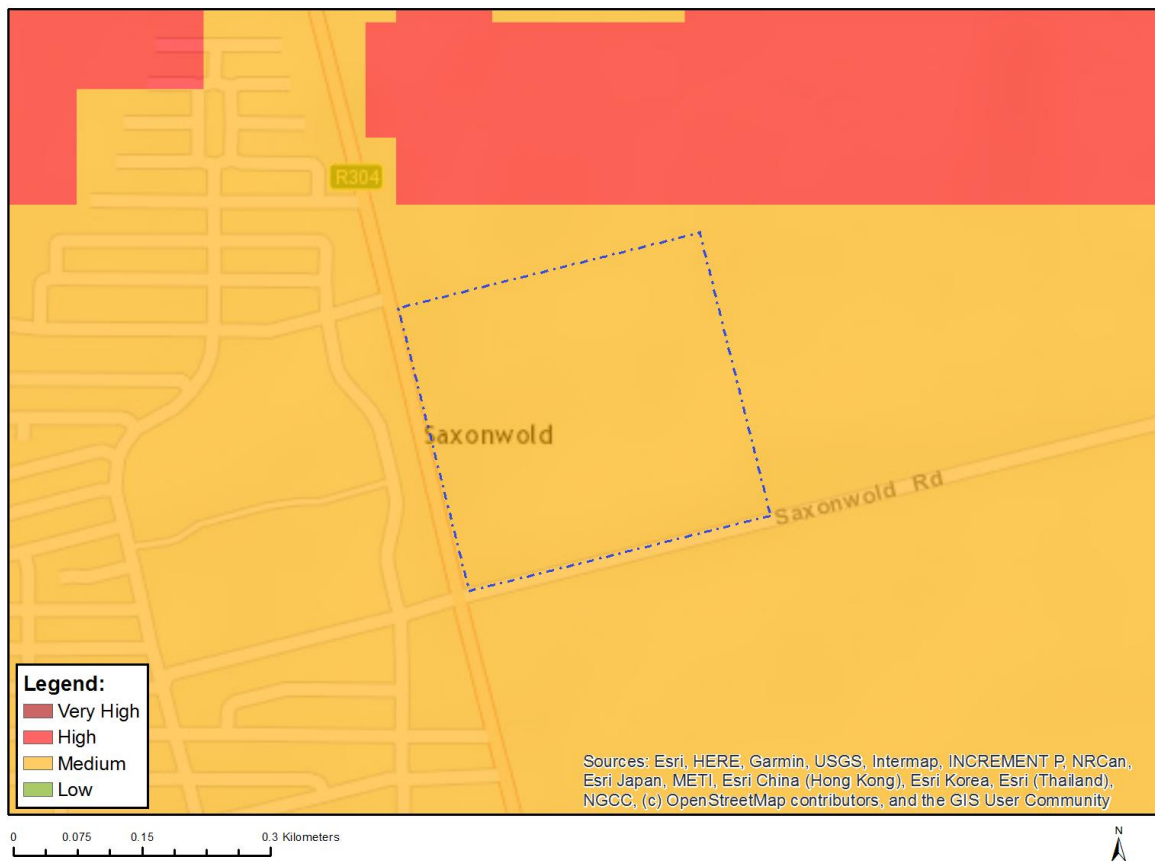


Very High sensitivity	High sensitivity	Medium sensitivity	Low sensitivity
		X	

Sensitivity Features:

Sensitivity	Feature(s)
Medium	Land capability;06. Low-Moderate/07. Low-Moderate/08. Moderate

MAP OF RELATIVE ANIMAL SPECIES THEME SENSITIVITY



Where only a sensitive plant unique number or sensitive animal unique number is provided in the screening report and an assessment is required, the environmental assessment practitioner (EAP) or specialist is required to email SANBI at eiadatarequests@sanbi.org.za listing all sensitive species with their unique identifiers for which information is required. The name has been withheld as the species may be prone to illegal harvesting and must be protected. SANBI will release the actual species name after the details of the EAP or specialist have been documented.

Very High sensitivity	High sensitivity	Medium sensitivity	Low sensitivity
		X	

Sensitivity Features:

Sensitivity	Feature(s)
Medium	Aves-Circus ranivorus
Medium	Aves-Circus maurus
Medium	Aves-Afrodis afra
Medium	Insecta-Aloeides egerides
Medium	Invertebrate-Pachysoma aesculapius
Medium	Invertebrate-Bullacris obliqua

MAP OF RELATIVE AQUATIC BIODIVERSITY THEME SENSITIVITY



Very High sensitivity	High sensitivity	Medium sensitivity	Low sensitivity
			X

Sensitivity Features:

Sensitivity	Feature(s)
Low	Low sensitivity

MAP OF RELATIVE ARCHAEOLOGICAL AND CULTURAL HERITAGE THEME SENSITIVITY

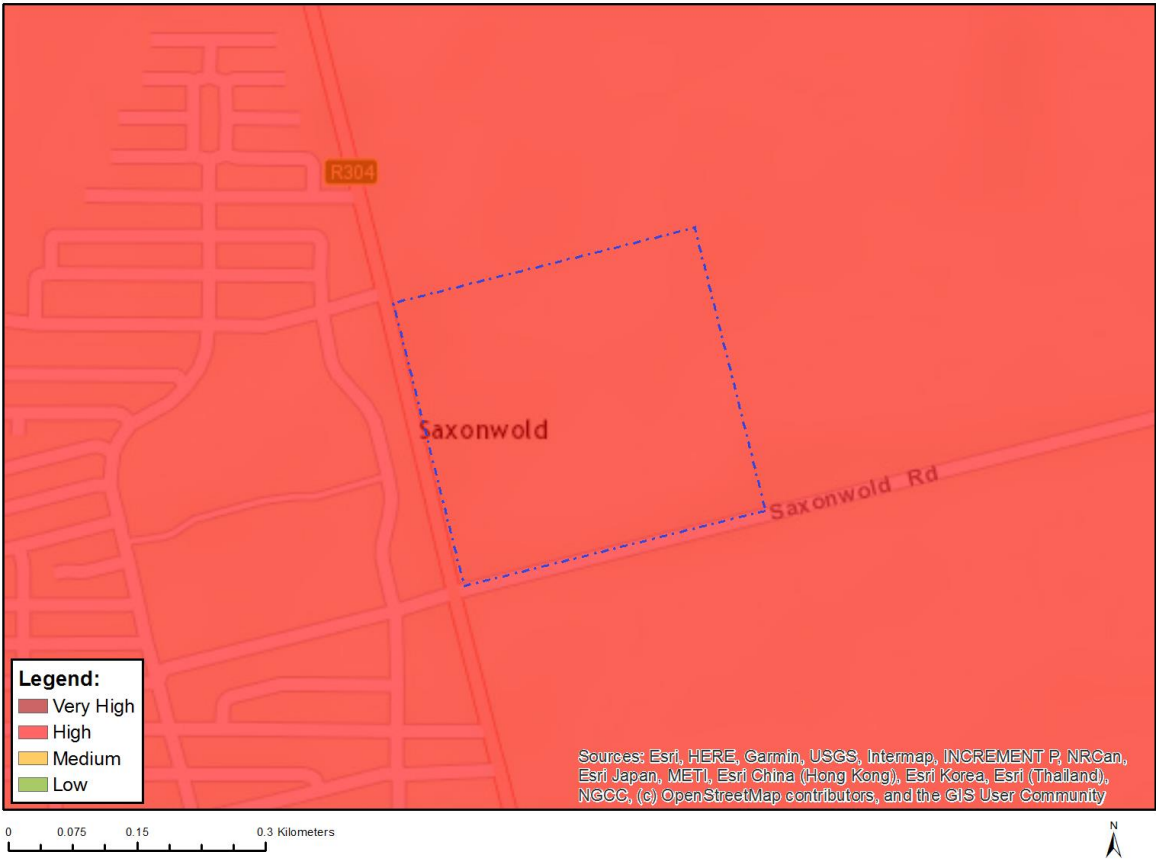


Very High sensitivity	High sensitivity	Medium sensitivity	Low sensitivity
			X

Sensitivity Features:

Sensitivity	Feature(s)
Low	Low sensitivity

MAP OF RELATIVE CIVIL AVIATION THEME SENSITIVITY



Very High sensitivity	High sensitivity	Medium sensitivity	Low sensitivity
	X		

Sensitivity Features:

Sensitivity	Feature(s)
High	Within 8 km of other civil aviation aerodrome
High	Dangerous and restricted airspace as demarcated

MAP OF RELATIVE DEFENCE THEME SENSITIVITY



Very High sensitivity	High sensitivity	Medium sensitivity	Low sensitivity
			X

Sensitivity Features:

Sensitivity	Feature(s)
Low	Low Sensitivity

MAP OF RELATIVE PALEONTOLOGY THEME SENSITIVITY

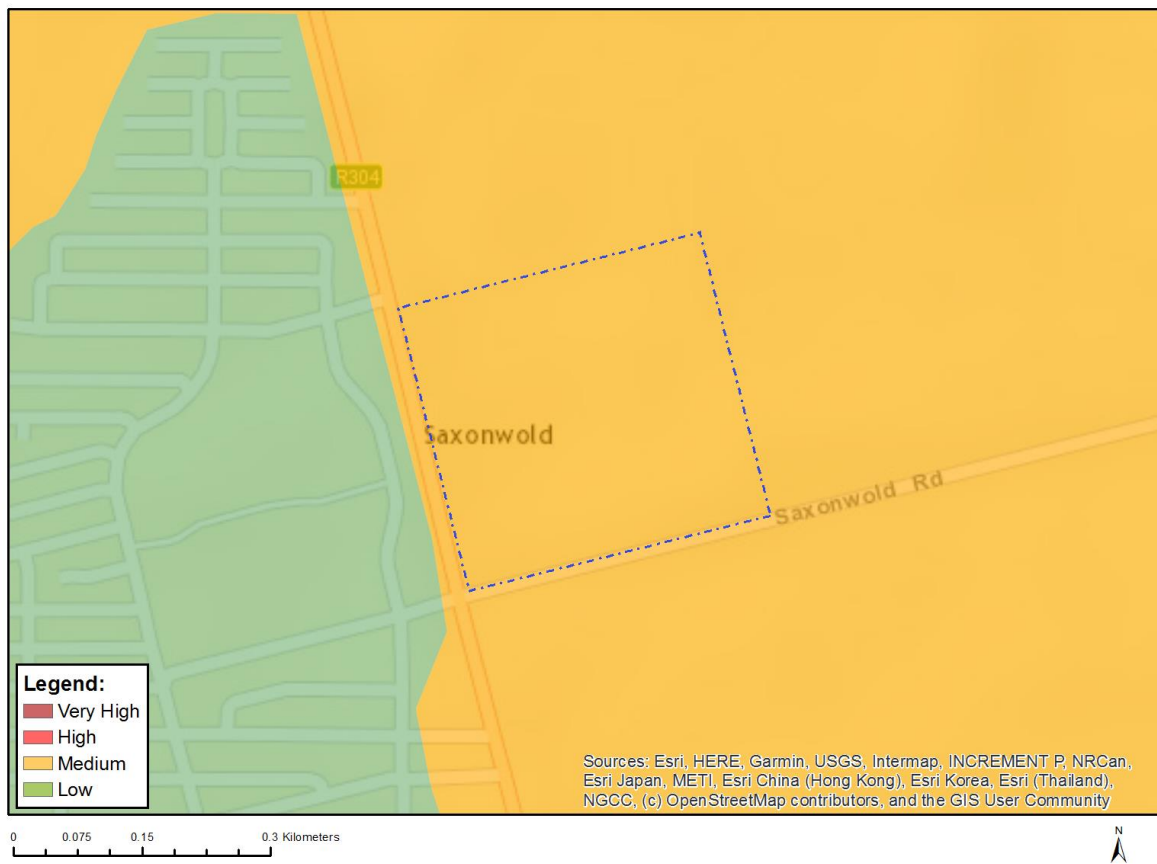


Very High sensitivity	High sensitivity	Medium sensitivity	Low sensitivity
			X

Sensitivity Features:

Sensitivity	Feature(s)
Low	Features with a Low paleontological sensitivity

MAP OF RELATIVE PLANT SPECIES THEME SENSITIVITY



Where only a sensitive plant unique number or sensitive animal unique number is provided in the screening report and an assessment is required, the environmental assessment practitioner (EAP) or specialist is required to email SANBI at eiadatarequests@sanbi.org.za listing all sensitive species with their unique identifiers for which information is required. The name has been withheld as the species may be prone to illegal harvesting and must be protected. SANBI will release the actual species name after the details of the EAP or specialist have been documented.

Very High sensitivity	High sensitivity	Medium sensitivity	Low sensitivity
		X	

Sensitivity Features:

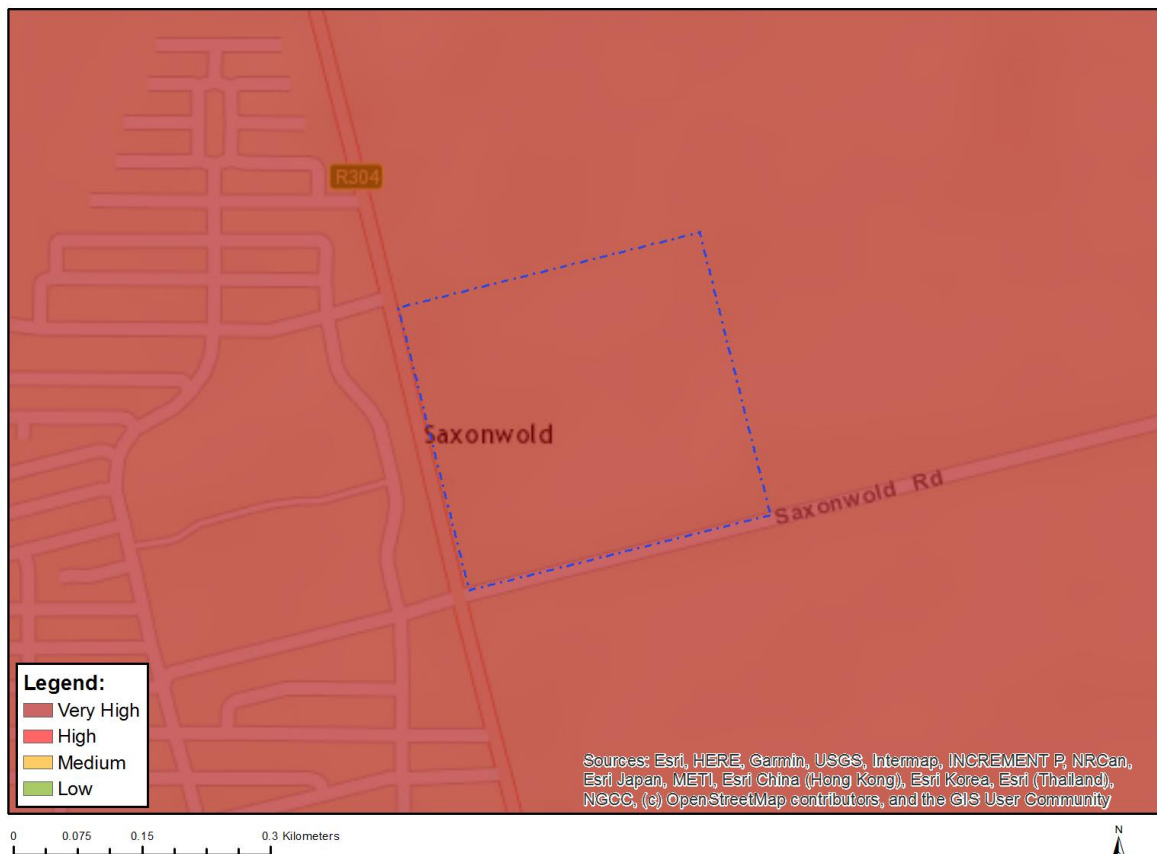
Sensitivity	Feature(s)
Medium	<i>Skiatophytum flaccidifolium</i>
Medium	<i>Lampranthus amoenus</i>
Medium	<i>Lampranthus aureus</i>
Medium	<i>Lampranthus filicaulis</i>
Medium	<i>Lampranthus leptaleon</i>
Medium	<i>Lampranthus peacockiae</i>
Medium	<i>Lampranthus spiniformis</i>
Medium	<i>Lampranthus stenopetalus</i>
Medium	<i>Lampranthus stenus</i>
Medium	<i>Lampranthus tenuifolius</i>
Medium	<i>Lampranthus stanfordiae</i>
Medium	Sensitive species 244
Medium	<i>Antimima aristulata</i>

Medium	Cleretum clavatum
Medium	Ruschia geminiflora
Medium	Ruschia tecta
Medium	Drosanthemum hispidifolium
Medium	Amphithalea ericifolia subsp. erecta
Medium	Psoralea glaucina
Medium	Aspalathus lotoides subsp. lotoides
Medium	Aspalathus muraltioides
Medium	Aspalathus retroflexa subsp. bicolor
Medium	Lebeckia plukenetiana
Medium	Podalyria sericea
Medium	Thesium litoreum
Medium	Leucadendron cinereum
Medium	Leucadendron corymbosum
Medium	Leucadendron lanigerum var. lanigerum
Medium	Leucadendron levisanus
Medium	Leucadendron stellare
Medium	Leucadendron thymifolium
Medium	Leucospermum hypophyllocarpodendron subsp. canaliculatum
Medium	Leucospermum hypophyllocarpodendron subsp. hypophyllocarpodendron
Medium	Leucospermum parile
Medium	Leucospermum tomentosum
Medium	Protea burchellii
Medium	Diastella proteoides
Medium	Serruria brownii
Medium	Serruria linearis
Medium	Serruria trilopha
Medium	Roella arenaria
Medium	Phyllopodium mimetes
Medium	Microdon capitatus
Medium	Manulea corymbosa
Medium	Selago psammophila
Medium	Pentameris bachmannii
Medium	Pentameris pholiuroides
Medium	Anthospermum ericifolium
Medium	Echiostachys incanus
Medium	Echiostachys spicatus
Medium	Aristea zeyheri
Medium	Sensitive species 267
Medium	Sensitive species 703
Medium	Sensitive species 533
Medium	Sensitive species 878
Medium	Geissorhiza eurystigma
Medium	Geissorhiza humilis
Medium	Geissorhiza monanthos
Medium	Geissorhiza purpurascens
Medium	Geissorhiza radians
Medium	Geissorhiza setacea
Medium	Ixia curta
Medium	Ixia tenuifolia
Medium	Sensitive species 881
Medium	Sensitive species 683
Medium	Sensitive species 816
Medium	Romulea eximia
Medium	Sensitive species 830
Medium	Sensitive species 863
Medium	Pauridia alba
Medium	Pauridia canaliculata
Medium	Pauridia linearis
Medium	Pauridia pygmaea

Medium	<i>Erica malmesburiensis</i>
Medium	<i>Stylapterus fruticosus</i>
Medium	<i>Hermannia procumbens</i> subsp. <i>procumbens</i>
Medium	Sensitive species 222
Medium	<i>Sebaea rara</i>
Medium	<i>Adenogramma rigida</i>
Medium	<i>Hessea cinnamomea</i>
Medium	Sensitive species 133
Medium	<i>Isolepis inconspicua</i>
Medium	<i>Isolepis leucoloma</i>
Medium	<i>Cannomois arenicola</i>
Medium	<i>Elegia prominens</i>
Medium	<i>Elegia acockii</i>
Medium	<i>Restio duthieae</i>
Medium	<i>Restio micans</i>
Medium	<i>Restio impolitus</i>
Medium	<i>Restio papillosus</i>
Medium	Sensitive species 985
Medium	Sensitive species 120
Medium	<i>Pterygodium microglossum</i>
Medium	<i>Gnidia spicata</i>
Medium	<i>Lachnaea uniflora</i>
Medium	<i>Metalasia capitata</i>
Medium	<i>Metalasia octoflora</i>
Medium	<i>Marasmodes fasciculata</i>
Medium	<i>Steirodiscus speciosus</i>
Medium	<i>Steirodiscus tagetes</i>
Medium	<i>Senecio foeniculoides</i>
Medium	<i>Cotula duckittiae</i>
Medium	<i>Cotula eckloniana</i>
Medium	<i>Athanasia rugulosa</i>
Medium	<i>Arctotis angustifolia</i>
Medium	Sensitive species 1042
Medium	Sensitive species 786
Medium	<i>Chrysocoma esterhuyseniae</i>
Medium	<i>Stoebe gomphrenoides</i>
Medium	<i>Arctotheca forbesiana</i>
Medium	<i>Heterorhachis aculeata</i>
Medium	<i>Relhania rotundifolia</i>
Medium	<i>Diosma dichotoma</i>
Medium	<i>Agathosma corymbosa</i>
Medium	<i>Agathosma glabrata</i>
Medium	<i>Agathosma glandulosa</i>
Medium	<i>Agathosma latipetala</i>
Medium	<i>Adenandra villosa</i> subsp. <i>biseriata</i>
Medium	<i>Macrostylis cassiopoides</i> subsp. <i>dregeana</i>
Medium	<i>Macrostylis villosa</i> subsp. <i>villosa</i>
Medium	<i>Cliffortia ericifolia</i>
Medium	<i>Cliffortia hirta</i>
Medium	<i>Limonium purpuratum</i>
Medium	<i>Muraltia brevicornu</i>
Medium	<i>Muraltia decipiens</i>
Medium	<i>Muraltia macropetala</i>
Medium	Sensitive species 158
Medium	<i>Wurmbea capensis</i>
Medium	<i>Wurmbea inusta</i>
Medium	<i>Phylica harveyi</i>
Medium	<i>Phylica plumosa</i> var. <i>squarrosa</i>
Medium	<i>Phylica strigulosa</i>
Medium	<i>Phylica thunbergiana</i>

Medium	Codonorhiza azurea
Medium	Lampranthus glaucus
Medium	Argyrobium velutinum
Medium	Xiphotheca reflexa
Medium	Aspalathus lebeckioides
Medium	Aspalathus recurva
Medium	Aspalathus tylodes
Medium	Leucospermum rodolentum
Medium	Protea scolymocephala
Medium	Sensitive species 593
Medium	Sensitive species 599
Medium	Elegia verreauxii
Medium	Restio paludosus
Medium	Restio rigoratus
Medium	Sensitive species 500
Medium	Sensitive species 654
Medium	Heliophila elata
Medium	Lachnaea capitata
Medium	Lachnaea grandiflora
Medium	Cotula pusilla
Medium	Sensitive species 1225
Medium	Caesia sabulosa

MAP OF RELATIVE TERRESTRIAL BIODIVERSITY THEME SENSITIVITY



Very High sensitivity	High sensitivity	Medium sensitivity	Low sensitivity
X			

Sensitivity Features:

Sensitivity	Feature(s)
Very High	EN_Atlantis Sand Fynbos